

# Parkheath

*Sold on Service*

---

**West End Lane NW6**

**£1,600 PCM (£369 per week) - Camden Band D**



Split level 1 bedroom apartment

Reception with bay window and wood flooring

Tiled shower room

Approx 6 minute walk to West Hampstead underground

Raised & lower ground floor of a period conversion

Semi open plan kitchen

Good sized bedroom

EPC rating: E / Council tax: Band D

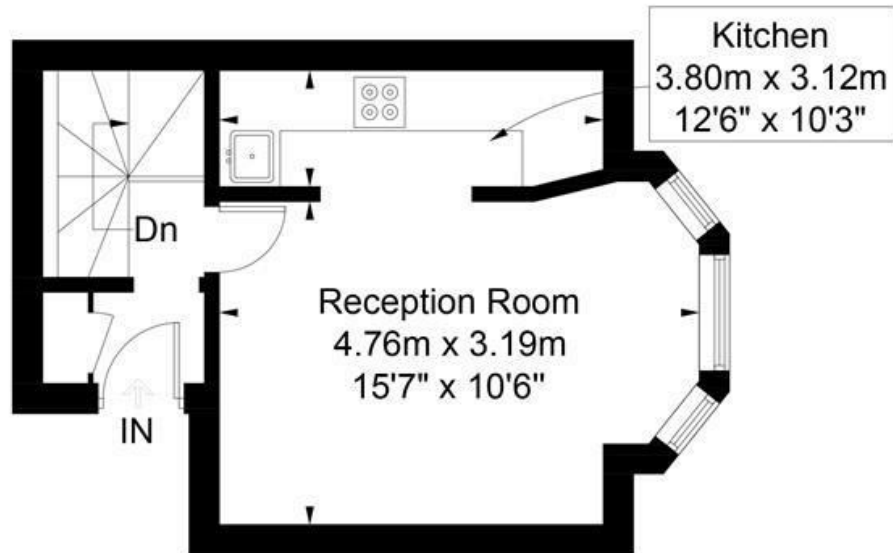
West Hampstead Office 020 7794 7111

## West End Lane

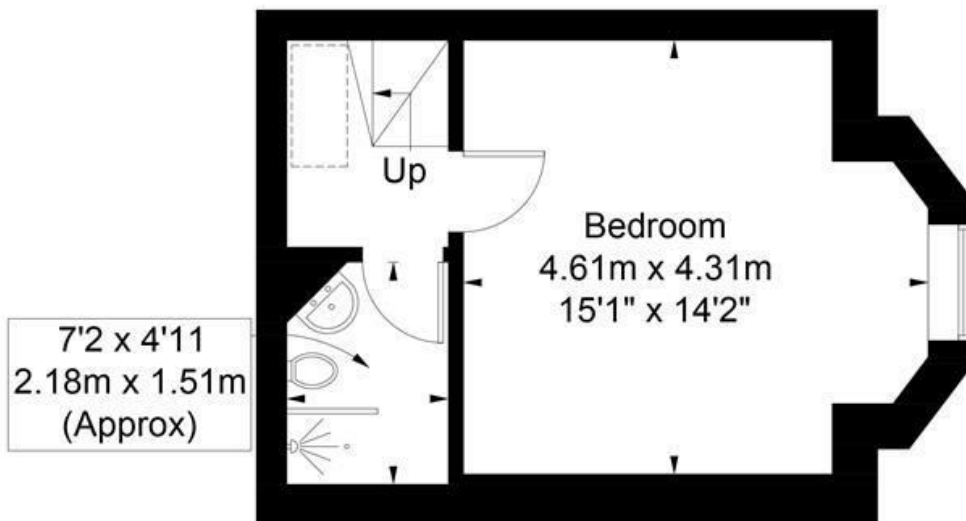
Approximate Gross Internal Area = 50.3 sq m / 541 sq ft



= Reduced headroom below 1.5m / 5'0"



## Raised Ground Floor



## Lower Ground Floor

Illustration for identification purposes only, measurements are approximate,  
not to scale. FloorplansUsketch.com © 2018 (ID449332)  
ELLIE CLAIRE PHOTOGRAPHY LTD

The particulars do not constitute part of an offer or contract. The particulars, including text, photographs and plans, are for the guidance only of prospective purchasers/tenants and must not be relied upon as statements of fact. The descriptions provided therein represent the opinion of the author and whilst given in good faith should not be construed as statements of fact. Nothing in these particulars shall be deemed a statement that the property is in good condition or otherwise or that any services or facilities are in good working order. All measurements are approximate